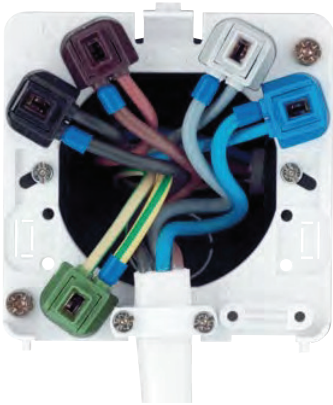


# OUTLET BOXES

with screwless terminals



**plug power**

The innovative, screwless clamp  
for fast and secure connections

- fast and safe connection
- for flush mounting and surface mounting
- for solid and stranded wires

## CONNECTABLE CABLE FOR SCREWLESS TERMINALS



Required strip and pin length for  
Cable Lug sizes 10 to 12 mm



Solid Wires 1,5 mm<sup>2</sup> to 2,5 mm<sup>2</sup>



Stranded Wires 1,5 mm<sup>2</sup> to 2,5 mm<sup>2</sup>  
with gas-tight, crimped ferrule



Stranded wires 1,5 mm<sup>2</sup> to 2,5 mm<sup>2</sup>  
with terminal pins



Stranded wires 1,5 mm<sup>2</sup> to 2,5 mm<sup>2</sup>



Stranded wires 1,5 mm<sup>2</sup> to 2,5 mm<sup>2</sup>  
ultrasonically welded



## OUTLET BOX

Thermoplastic  
For flush mounting and surface  
mounting  
Claw bracket can be snapped out  
Cover with snap lock  
Terminals: 5 x 2,5 mm<sup>2</sup>

COLOUR	ARTICLE NO.	WEIGHT G/EACH	PACK. UNIT
--------	-------------	---------------	------------

white	2504210	63	10
-------	---------	----	----

# OUTLET BOXES

with screw terminals – compliant with VDE 0606



## OUTLET BOX

Thermoplastic · for surface mounting  
Cover with snap lock  
Terminals: 5 x 2,5 to\* 6 mm<sup>2</sup>

COLOUR	ARTICLE NO.	WEIGHT G/EACH	PACK. UNIT
white	2505010	80	10



## OUTLET BOX

Thermoplastic · For flush mounting and surface mounting · Cover with snap lock · Terminals: 5 x 2,5 to\* 6 mm<sup>2</sup>

COLOUR	ARTICLE NO.	WEIGHT G/EACH	PACK. UNIT
white	2505110	80	10



## OUTLET BOX

Thermoplastic · For flush mounting and surface mounting · Claw bracket can be snapped out · Cover with snap lock  
Terminals: 5 x 2,5 to\* 6 mm<sup>2</sup>

COLOUR	ARTICLE NO.	WEIGHT G/EACH	PACK. UNIT
white	2505210	90	10



## BASE PLATE IP44

with two cable entries  
for outlet boxes 2505

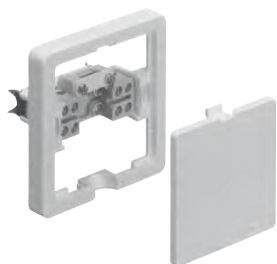
COLOUR	ARTICLE NO.	WEIGHT G/EACH	PACK. UNIT
white	2505018	32	10



## ADDITIONAL TERMINALS AND STRAIN RELIEF

2 Terminals 6 mm<sup>2</sup> · can be snapped onto terminal strip · for outlet boxes · 2505010/110/210

COLOUR	ARTICLE NO.	WEIGHT G/EACH	PACK. UNIT
black	2505ZKS	14	1



## OUTLET BOX

Thermoplastic · for flush mounting flat version  
Cover with snap lock  
Terminals: 5 x 2,5 mm<sup>2</sup>  
**extra flat – only 11 mm**

COLOUR	ARTICLE NO.	WEIGHT G/EACH	PACK. UNIT
white	2506110	61	10



## OUTLET BOX

Thermoplastic · For flush mounting and surface mounting  
Claw bracket can be snapped out  
Cover with snap lock  
Terminals: 5 x 2,5 to\* 6 mm<sup>2</sup>

COLOUR	ARTICLE NO.	WEIGHT G/EACH	PACK. UNIT
white	2510310	102	10



## THREE-CHAMBER OUTLET BOX

For flush mounting and surface mounting  
Dowel fastening  
Terminals: 5 x 2.5 to\* 6 mm<sup>2</sup> /  
7 x 2.5 mm<sup>2</sup>

COLOUR	ARTICLE NO.	WEIGHT G/EACH	PACK. UNIT
white	2518610	166	5

\* if conductor section is > 5 x 2,5 mm<sup>2</sup>  
use additional strain relief.